

PDFVCE



Choose the version that fits your needs	PDF Version	Desktop Test Engine	Online Test Engine
Latest and Up-to-Date exam dumps with real exam questions answers.	✓	✓	✓
Get 12-Months free updates without any extra charges.	✓	✓	✓
Experience same exam environment before appearing in the certification exam.	✗	✓	✓
100% exam passing guarantee in the first attempt.	✓	✓	✓
20% discount on more than one license and 30% discount on 5+ license purchases.	✗	✓	✓
100% secure purchase on SSL.	✓	✓	✓
Completely private purchase without sharing your personal info with anyone.	✓	✓	✓

<http://www.pdfvce.com>

Highly Efficiently Exam Tool and Effective Exam Practice Materials

Exam : **1Y0-201**

Title : **Managing Citrix XenDesktop
7.6 Solutions**

Vendor : **Citrix**

Version : **DEMO**

NO.1 Scenario: An employee attempts to log in to a Desktop OS machine and receives the following error: Startup Failed Personal vDisk failed to start Status Code: 15 How could a Citrix Administrator resolve this issue?

- A. Change the startup order.
- B. Restart the Desktop OS machine.
- C. Run an inventory update on the Desktop OS machine.
- D. Reconfigure the Virtual Delivery Agent of the affected Desktop OS machine.

Answer: C

NO.2 Scenario: A Citrix Administrator is in the process of creating a new session machine catalog. On the 'Machine Management' page, 'Machine Creation Services (MCS)' is grayed out. What should the administrator do to enable this option for selection?

- A. Restart the Delivery Controller.
- B. Add a new resource connection.
- C. Use the New-BrokerCatalog PowerShell cmdlet.
- D. Install the 'Machine Creation Service Extension' on each Delivery Controller.

Answer: B

NO.3 CORRECT TEXT

Scenario: Members of the HR user group at CCH need access to desktops running Windows 8. The desktops provided to HR users must be in a separate device collection named HR. As part of a pilot, a Citrix Administrator must use the Provisioning Services Console to create the device collection and initially four target devices with plans to add 20 more. The target devices named Win801T Win802. Win803 and Win804 should be assigned the CCH_Win8 vDisk and those devices should be assigned to the HR OU. XenDesktop is NOT being used for the HR team at the moment.

The hypervisor information for the environment is:

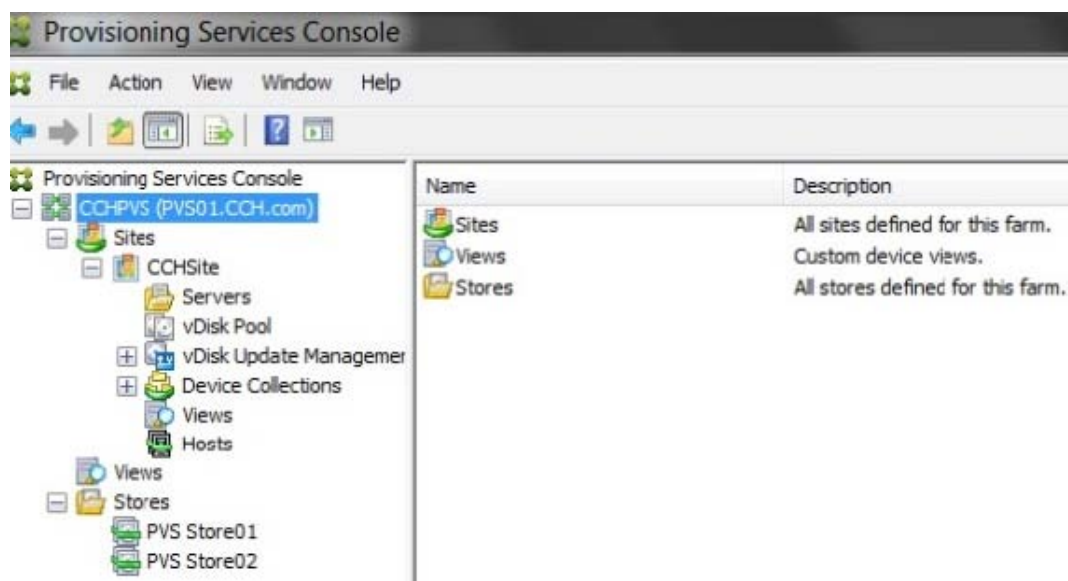
XenServer IP Address: 192.168.10.5

Username: root

Password: Password 1

Tasks:

1. Create a device collection named HR.
2. Create four target devices named Win801, Win802. Win803 and Win804, and add the target devices to the HR device collection.
3. Ensure the target devices are configured to meet the requirements outlined in the scenario.

**Answer:**

Review the steps and solution in explanation below.

Explanation:

- 1) In Provisioning Services Console, right click on "Device" and click on Create Device Collection.
- 2) In the "General" type in the name " HR" and click on OK.
- 3) Right click on "CCHSite" node and select Streamed Virtual Machine Setup.
- 4) From the "Hypervisor connection" dialog window type in the Hypervisor IP address, username and password provided then click on Next.
- 5) From the "Virtual machine template" dialog window select the correct virtual machine template then click on Next.
- 6) From the "vDisk" dialog window select CCH_Win8 then click on Next.
- 7) From the "Collection" dialog window select HR from the drop-down window then click on Next.
- 8) From the "Virtual Machines" dialog window, increase the "Number of virtual machines to create" to 4 then click on Next. 9) From the "Active Directory" dialog window verify "Create new accounts" is selected then click on Next.
- 10) From the "Active Directory accounts and location" dialog windows select the HR OU; in the "Account naming scheme" field type in the "Basename#" of Win8##, select drop down to the right, then click on Next.
- 11) From the "Summary" dialog windows click on Finish.
- 12) When the devices are finished creating click on Done.
- 13) You can verify the new devices were created correctly in the HR Device Collection you created initially.

NO.4 Scenario: Users report slow application launch times after a master image update. These users have critical deadlines and need access to their machines as soon as possible.

How should a Citrix Administrator resolve the slow application launch times?

- A. Revert to the previous image.
- B. Reset user profiles using Citrix Director.
- C. Restart the impacted Desktop OS machines.

D. Migrate the Desktop OS machines to a different host.

Answer: D

NO.5 Scenario: A Citrix Administrator at a medical facility needs to set up kiosks for non-corporate users to launch an application that utilizes internal authentication. The administrator needs to configure the site store.OrgA.com to allow this.

How should the administrator configure the store to accomplish this requirement?

- A. Configure a new store as internal only with remote access.
- B. Add a VPN in Remote Access for store.OrgA.com to allow access.
- C. Configure the existing store as internal only with Remote Access set to None.
- D. Create an anonymous store using the Delivery Controllers belonging to OrgA.

Answer: D

NO.6 Scenario: A high number of Desktop OS machines are displaying as 'Unregistered' in Citrix Studio. However, Desktop OS machines that are registered are functioning as expected.

What is the likely cause of this issue?

- A. The Delivery Controller is unable to register with DNS.
- B. The Delivery Controller is NOT configured to trust XML requests.
- C. A Digital certificate is NOT installed on the Desktop OS machines.
- D. The affected Desktop OS machines are unable to register with DNS.

Answer: D

NO.7 Scenario: A Citrix Administrator manages a XenDesktop environment where Machine Creation Services is used to create and deploy Server and Desktop OS machines. After an application update on the master image for the Desktop OS machines, users report functionality issues with their Desktop OS machines.

What should the administrator do to resolve the reported issue?

- A. Reset user profiles using Citrix Director.
- B. Select 'Revert to' in the Snapshots menu in XenServer.
- C. Restart the Desktop OS machines using Citrix Director.
- D. Use the 'Rollback Machine Update' option in Citrix Studio.

Answer: D

NO.8 Scenario: Human Resources has published training videos that all employees must watch. Employees are encountering buffering delays and poor video quality when trying to watch the videos

Which tool could a Citrix Administrator use to identify the cause of this issue?

- A. Citrix Studio
- B. HDX Monitor
- C. CDF Control
- D. Task Manager

Answer: B

NO.9 After installing Firefox and Adobe Reader on the master target device and updating the vDisk, users report the new applications are NOT visible.

What should a Citrix Administrator do to resolve this issue?

- A. Set the vDisk mode to 'Production.'

- B. Merge existing vDisks with the base version.
- C. Revert the vDisk target to the previous version.
- D. Select 'Update Machines' on the Machine Catalog.

Answer: A

NO.10 Scenario: A new Electronic Medical Records application has been deployed on XenDesktop. The application stores a user specific file in C:\Program Files\EMR\%username%. This file needs to be included in the user profile to provide a consistent user experience. Citrix Profile Manager is enabled. What could a Citrix Administrator do to add the file to the user profile?

- A. Configure a Citrix policy with Active Writeback.
- B. Apply a policy in Citrix Studio with file inclusion.
- C. Add the EMR folder to the mandatory profile location.
- D. Use Microsoft Folder Redirection to include the EMR folder.

Answer: B